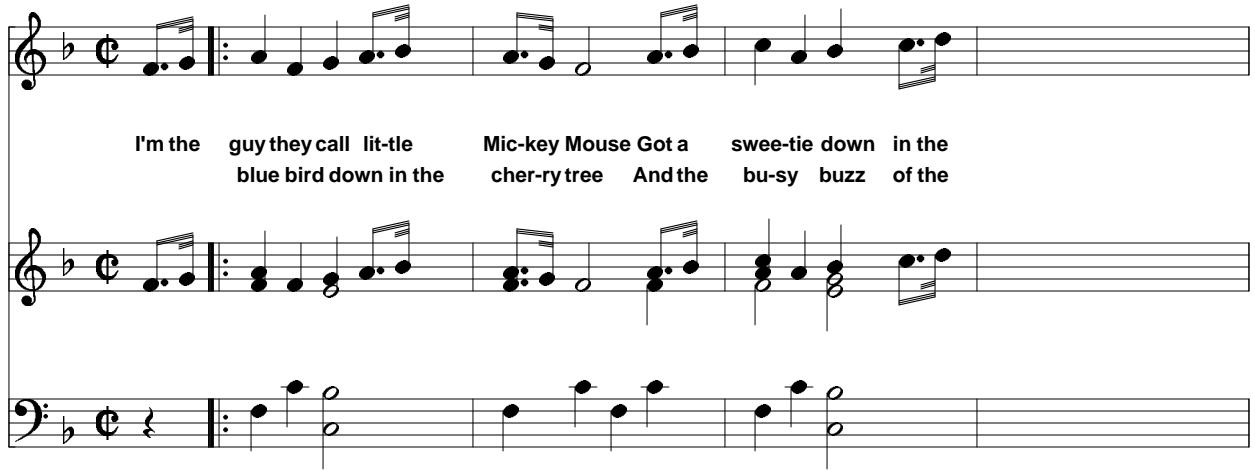


Minnie's Yoo Hoo (1930)

Lyrics: Walt Disney and Carl Stalling

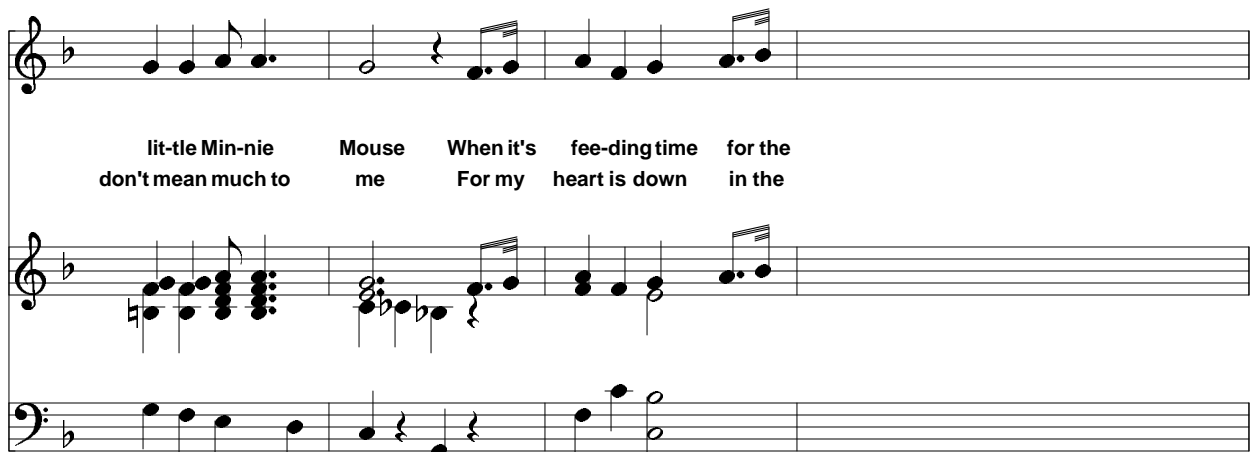
Music: Carl Stalling



I'm the guy they call lit-tle Mic-key Mouse Got a swee-tie down in the
blue bird down in the cher-ry tree And the bu-sy buzz of the



chic-ken house Nei-ther fat nor skin-ny, she's the hor-ses whin-ny She's my
bum-blebee Eve-ning bells a ring-in', whip-poor - will's a sing-in' Well they



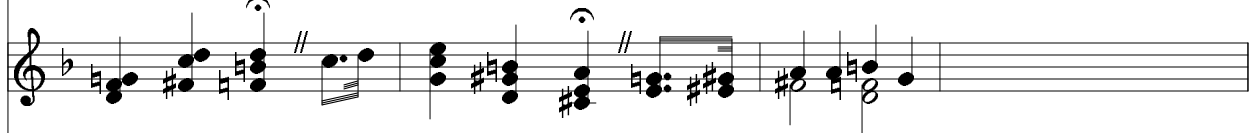
lit-tle Min-nie Mouse When it's fee-ding time for the
don't mean much to me For my heart is down in the



a - ni - mals And they howl and growl like the can - ni - bals I just
chic - ken house Where I long to be with my Min - nie Mouse And I'll



turn my heel, to the hen house steal And you hear me sing this
meet her there, mid that fra - grance rare Sing to her this me - lo -



song } Oh, the old tom cat with his meow, meow, meow Old houn' dog with his
dy }



bow, wow, wow The crows caw, caw, and the mule's hee-haw Gosh what a rac-ket like an

old buzz saw I have lis-tened to the Coo-coo kook his koo-koo And I've

heard the roo-ster cock his doo-dle doo doo With the cows and the chic-kens, they all

The image shows a musical score for three staves. The top staff is a vocal melody in G major, featuring a melodic line with a first ending and a second ending. The middle staff is a piano accompaniment in G major, providing harmonic support with chords and arpeggiated patterns. The bottom staff is a bass line in G major, consisting of a simple harmonic accompaniment. The lyrics are: "sound like the dic-kens When I hear my lit-tle Min-nie's yoo hoo. Oh, the yoo hoo." The score includes a key signature of one flat (F major/G minor), a common time signature, and a repeat sign with first and second endings.

sound like the dic-kens When I hear my lit-tle Min-nie's yoo hoo. Oh, the yoo hoo.